

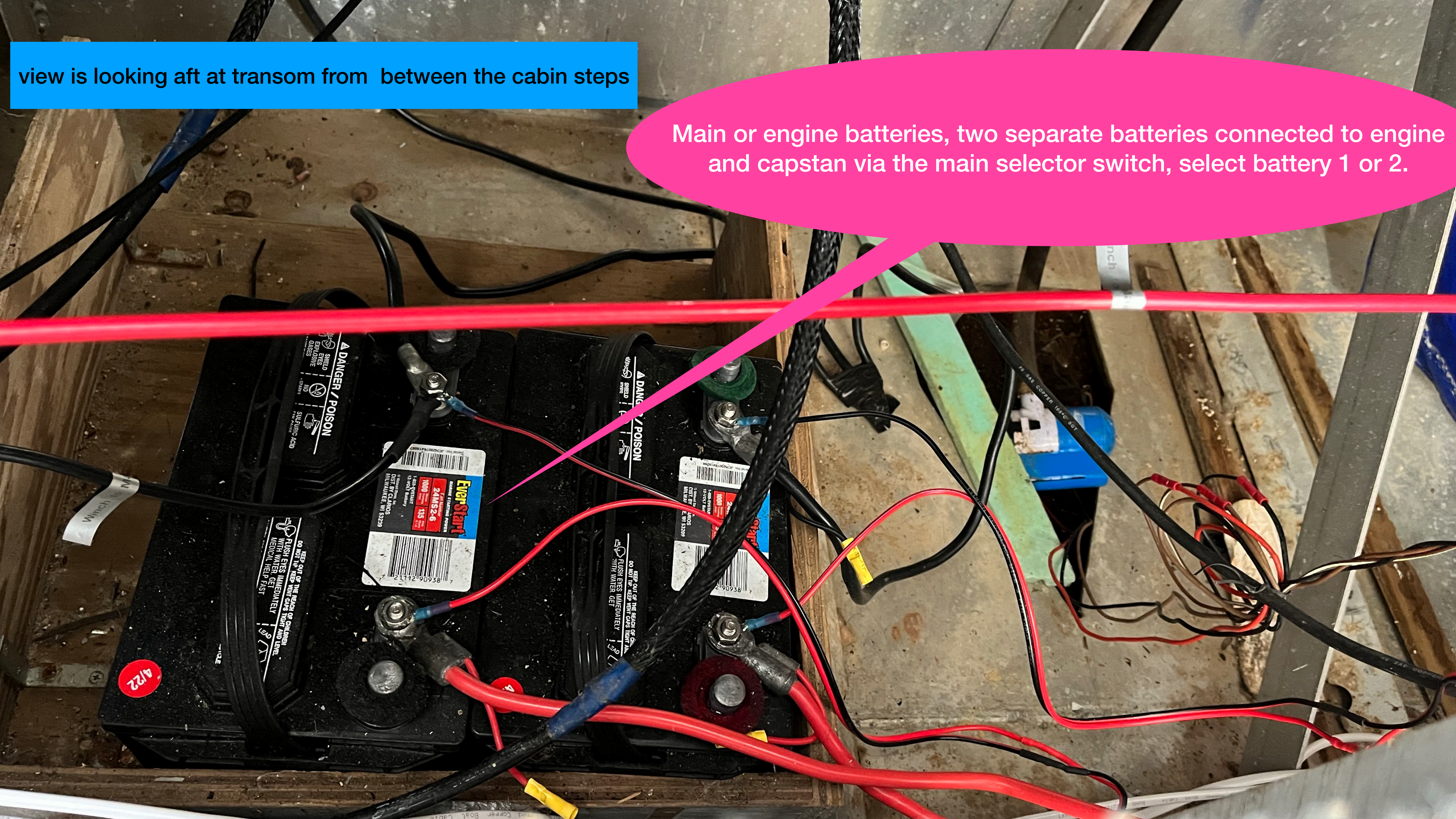
# Basic Signal Barge DC Power System

Len Wert March 2023



view is looking aft at transom from between the cabin steps

Main or engine batteries, two separate batteries connected to engine and capstan via the main selector switch, select battery 1 or 2.







Main Selector Switch, choose between Main Battery 1 or 2

Solar Panel Controllers, each of the Main batteries has one solar panel charging it.

Panel to Main Batt

Winch Fuse

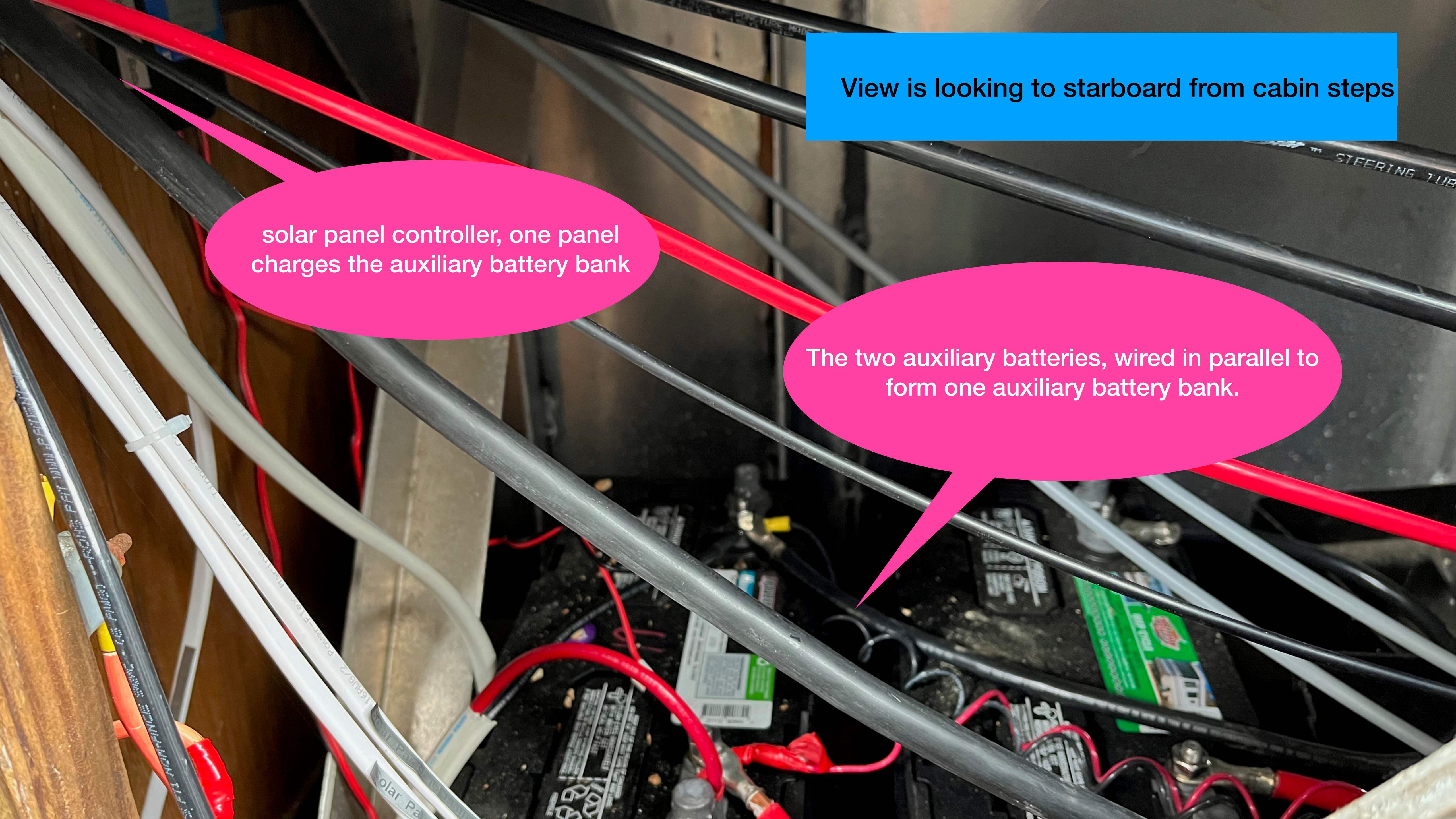
Solar



View is looking to starboard from cabin steps

solar panel controller, one panel charges the auxiliary battery bank

The two auxiliary batteries, wired in parallel to form one auxiliary battery bank.





ATLANTA YACHT CLUB

NO ROOF ACCESS  
FRAGILE  
SOLAR PANELS

Three new solar panels,  
one connected to the auxiliary battery bank,  
other two are each connected to one  
main battery.

